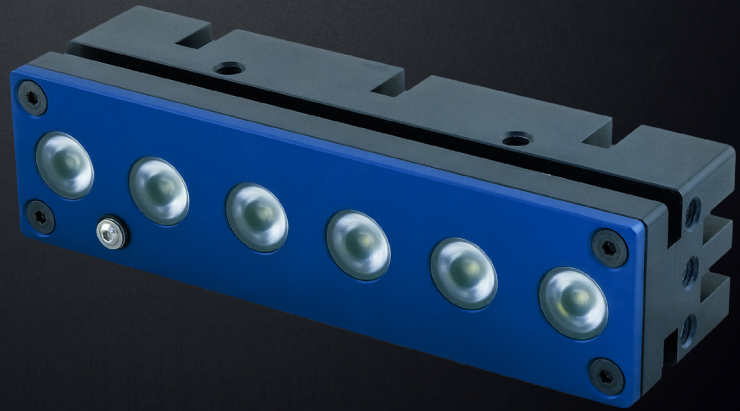


LENS BAR LIGHT

LL-150

Strong, direct, exchangeable-optics illumination of distant surfaces. Allows the use of Dark and Bright Field sources depending on the distance and angle towards the scanned object.



3 TYPES OF EXCHANGEABLE OPTICS

ANALOGUE REGULATION OF LIGHT INTENSITY

INTEGRATED TRIMMER

LIGHT OPERATING MODES

PERMANENT ILLUMINATION MODE

This light is designed for both the permanent and light-triggering mode. For permanent illumination bring the voltage of 24 V to the pin number 4 (black wire). The light is ON during the time when the 24 V EN signal is activated. Use a PCL, camera or another binary signal source. For the light intensity control, please see the text below.

LIGHT TRIGGERING MODE

Light triggering mode saves energy and extends the lifetime of the light. Trigger operation mode is recommended when a parallel operation of 2 or more lights might affect the quality of the acquired image. To start using a triggering mode, bring the pin number 4 (black wire) to a 24 V signal. The light is ON when a voltage of 24 V is present at pin number 4 then. Use a PCL, camera, or another binary signal source for triggering. For the light intensity control, please see the text below.

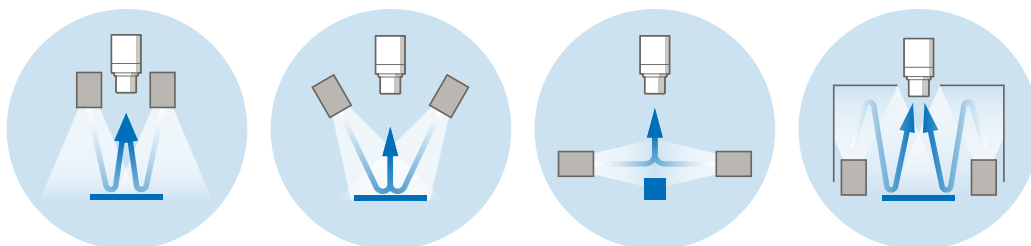
STROBE MODE

Strobe function significantly multiplies the maximum intensity of the light. The strobing function saves energy, extends the light lifetime and in many cases improves the stability of the entire inspections system. Pin number 2 (white wire) of the M8 connector is used to activate the strobe function. The maximum strobe pulse time is 470 ms, while the light idle time must be at least 3 times longer. Please do not use a trigger mode during strobing function, do not bring a voltage to the pin number 4.

LIGHT SOURCE INTENSITY REGULATION

The light intensity might be regulated by an internal trimmer.

WAYS OF USE



CONFIGURATION

example of the ordering code

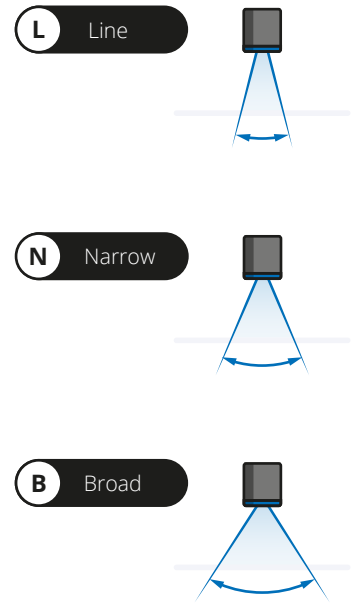
LL - 150 B - L
 Linear Light Light Length Wavelength Optics

CONFIGURATION

Model	Wavelength [nm]	Light Length [mm]
LL-150W	CTR 5000 k	150
LL-150IR	850	150
LL-150HR	660	150
LL-150R	625	150
LL-150G	528	150
LL-150B	470	150

OPTICS

different types of light optics



ELECTRIC PARAMETERS

Model	LL-150W	LL-150IR	LL-150HR	LL-150R	LL-150G	LL-150B
U_n Voltage Span	22-28 V	22-28 V	22-28 V	22-28 V	22-28 V	22-28 V
U_{jm} Nominal Voltage	24 V DC	24 V DC	24 V DC	24 V DC	24 V DC	24 V DC
I_{jm} Nominal Current	525 mA	525 mA	500 mA	500 mA	525 mA	525 mA
P Input	12.6 W	12.6 W	12 W	12 W	12.6 W	12.6 W

U_{trig} Trigger Voltage 24 V DC ¹

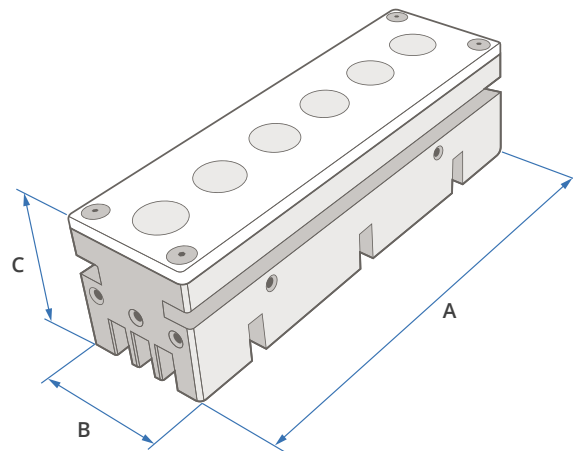
I_{trig} Trigger Current 2.3 mA ¹

¹ EN (Enable) trigger signal values, M8 connector – pin number 4

DIMENSIONS & WEIGHT

A Length [mm]	150
B Width [mm]	40
C Height [mm]	44
Weight [g]	476

i For more details please see our 2D drawings.

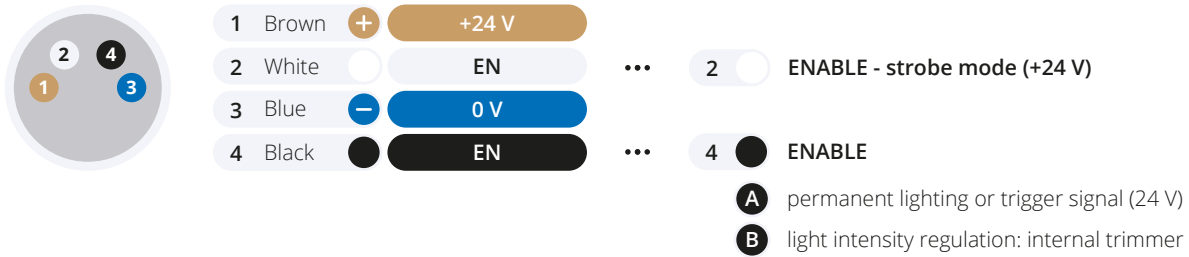


TECHNICAL DATA

IP Category: **IP60** Protection Category: **III** Ambient Temperature: **-20 - +40 °C** Isolation Resistance: **500 V** Housing Material: **Aluminium alloy**

CONNECTOR M8-4PIN ASSIGNMENT

light connector front view



ACCESSORIES

- ✓ Angular Cable M8-4PIN (5 m)
- ✓ Optics from **Optional Accessories**

OPTIONAL ACCESSORIES

- + Straight Cable M8-4PIN (5 m)
- + Line optics
- + Broad optics
- + Narrow optics
- + Controller **Smart Light CT-SL4D**
- + Controller **CM-01**
- + IP Category **IP67**
- + Light Polarizing Cover **PF-LL150-V|H**

 SmartView

**YOUR
VISION
PARTNER**



COMPANY OFFICE

Smart View s.r.o.
Nivy 313
765 02 Otrokovice
Česká republika

+420 601 575 797
+420 602 457 497

info@smartview.cz
www.smartview.cz

OUR SALES PARTNERS SLOVAKIA

MTS, spol. s r.o.
Krivá 53
027 55 Krivá
Slovensko

+421 43 5819 111

mts@mts.sk
www.mts.sk